

vtech®

Instruction Manual

**MARBLE
RUSH**®

**JUNGLE
JOURNEY SET**™



INTRODUCTION

Thank you for purchasing the **Marble Rush® Jungle Journey Set™!** Let's go on a safari marble adventure! Send the included marbles through this jungle set, passing by the animal friends Giraffe, Elephant and Crocodile! Please refer to the color manual for detailed assembly steps.

INCLUDED IN THE PACKAGE

- **Marble Rush® Jungle Journey Set™**
- 47 Building Pieces
- 10 Decorative Pieces
- 1 Playmat
- 6 marbles
- Sticker sheet
- Color Build Guide
- Quick Start Guide

WARNING

All packing materials such as tape, plastic sheets, packaging locks, removable tags, cable ties, cords and packaging screws are not part of this toy, and should be discarded for your child's safety.

NOTE

Please keep this manual as it contains important information.

NOTE

Please keep the color manual as it contains important construction steps required for play set assembly.

ATTENTION

Pour la sécurité de votre enfant, débarrassez-vous de tous les produits d'emballage tels que rubans adhésifs, feuilles de plastique, attaches, étiquettes, cordons et vis d'emballage. Ils ne font pas partie du jouet.

NOTE

Il est conseillé de conserver ce guide de démarrage rapide car il comporte des informations importantes.

NOTE :

Il est conseillé de conserver le guide de construction en couleurs car il comporte des étapes importantes pour l'assemblage du circuit.



WARNING:

CHOKING HAZARD-Toy contains small parts and small balls. Not for children under 3yrs.

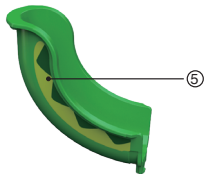
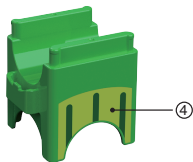
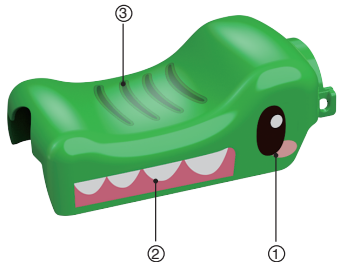
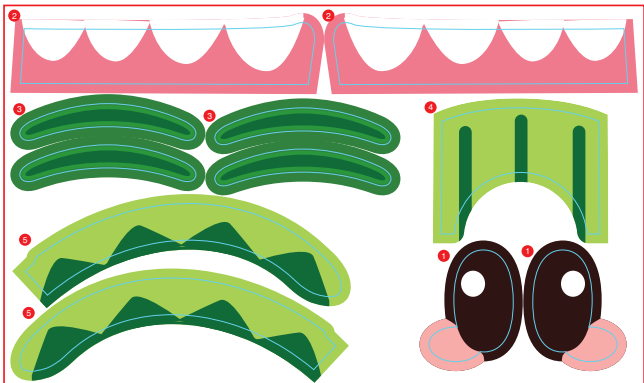


ATTENTION :

Ne convient pas aux enfants de moins de 36 mois. Petits éléments et petites balles. Danger d'étouffement.

LABEL APPLICATION

Please securely stick the labels to the play set as indicated below:



CARE & MAINTENANCE

1. Keep the unit clean by wiping it with a slightly damp cloth.
2. Keep the unit out of direct sunlight and away from any direct heat sources.
3. Do not drop the unit on hard surfaces and do not expose the unit to moisture or water.

IMPORTANT NOTE:

If the problem persists, please call our **Consumer Services Department** at **1-800-521-2010** in the U.S., **1-877-352-8697** in Canada, or by going to our website **vtechkids.com** and filling out our **Contact Us** form located under the **Customer Support** link. Creating and developing VTech products is accompanied by a responsibility that we take very seriously. We make every effort to ensure the accuracy of the information, which forms the value of our products. However, errors sometimes can occur. It is important for you to know that we stand behind our products and encourage you to contact us with any problems and/or suggestions you might have. A service representative will be happy to help you.

**Visit our website for more
information about our products,
downloads, resources and more.**

vtechkids.com
vtechkids.ca

Read our complete warranty policy online at
vtechkids.com/warranty
vtechkids.ca/warranty

